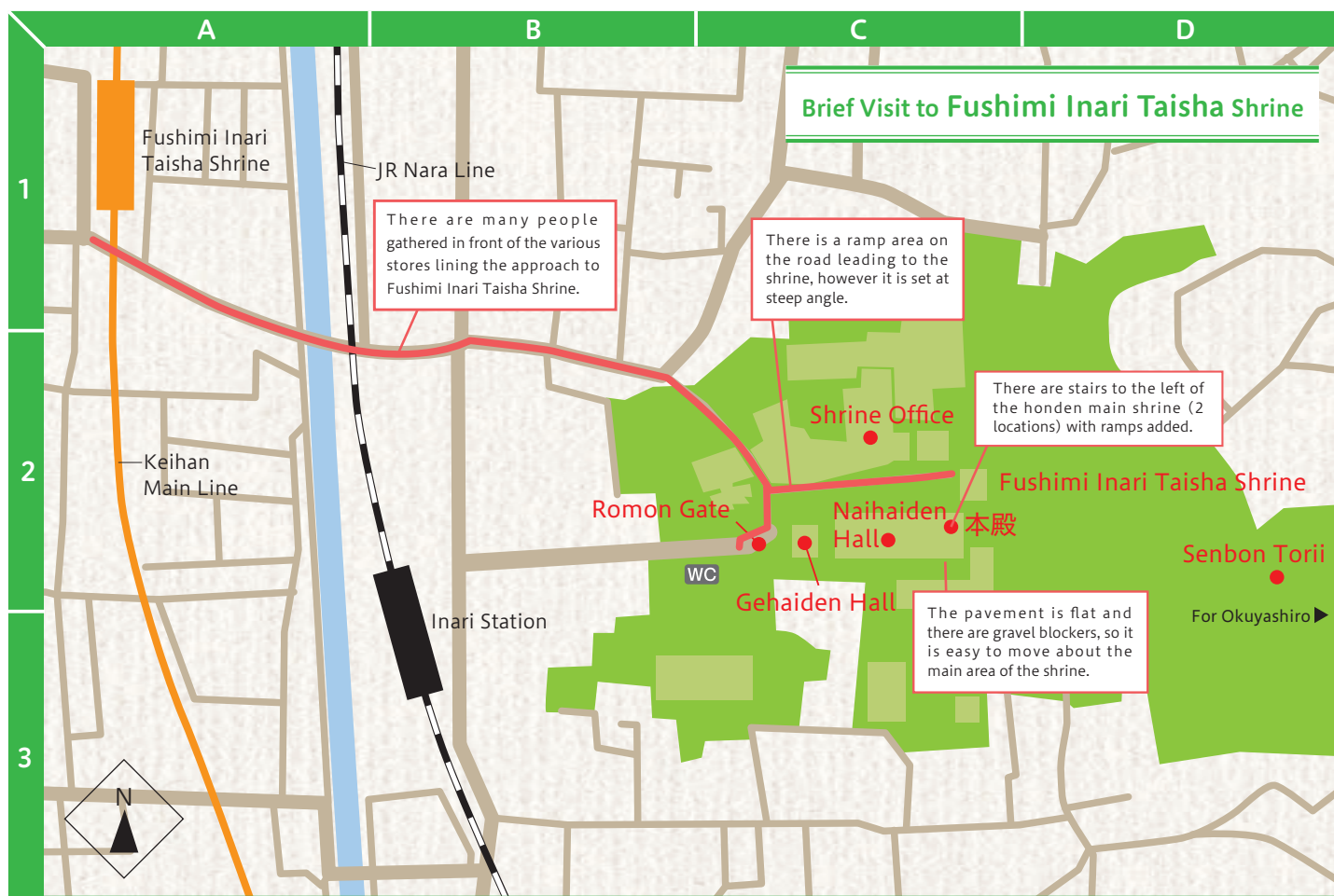


Fushimi Wheelchair Access Sightseeing Map

Kyoto City, in order to create an environment so that all visitors can enjoy sightseeing with in the city, regardless of age or disability, is offering free wheelchair rentals in the Fushimi area based on the cooperation of local bicycle rental shops and other private businesses.



Length Approx. 260m (excludes time spent within the shrine grounds)

Time 8 min (excludes time spent the shrine)




Course Route Fushimi Momoyama Station on Keihan Main Line → Fushimi Inari Station → Fushimi Inari Taisha Shrine → Fushimi Inari Station → Momoyama Station on Keihan Main Line

Fushimi Inari Taisha Shrine

With its history beginning in 711, the shrine is the head of all Fushimi Inari Shrines in the country. Originally the shrine was known for its agriculturally related deities, but now it is most widely known for business related deities. Each year it competes for the top 2 spots as the most visited shrine for New Years in Kansai. The honden or main shrine (Important Cultural Property) is a Muromachi Period construction. The shrine is famous for the vermillion gates of the Senbon Torii running the paths from the honden to the inner shrine. There are ramps built along the road to the shrine and at the honden, so that wheelchair users aided by an accompanying person will have an easier time visiting Fushimi Inari Taisha Shrine.



Address: 68 Fukakusa Yabunouchi-cho, Fushimi-ku, Kyoto-shi
Open: 9:30-16:30 (Last entry 16:15)
Entry Fee: Free entry to shrine grounds
Tel: 075-641-7331
Access: 5min walk from Fushimi Inari Station on Keihan Main Line or Just across from JR Inari Station on JR Nara Line.
Restrooms: Wheelchair accessible

-  Komafuda
-  Seven-Eleven
-  Wheelchair Accessible Restroom

*Please be aware that based on the grounds of the temple or shrine that an accompanying person may be necessary, and based on the location of buildings and the terrain, viewing or accessing the building may be difficult or not possible. For more details about wheelchair accessibility, please contact the temple or shrine directly.

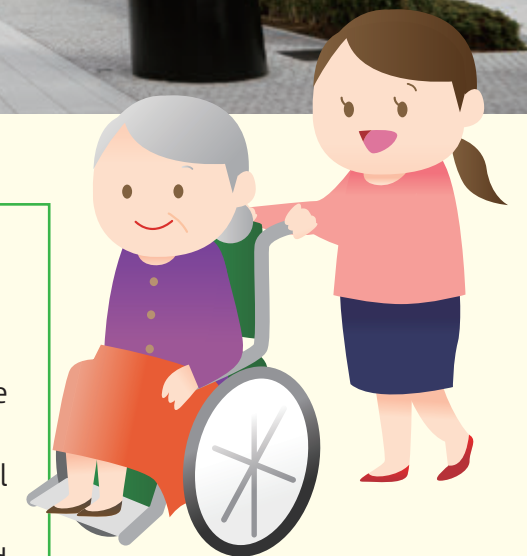
*There may be cases where you will be required to show a disability certificate.

When you finished with this map, please recycle with misc. paper at any collection point!



Conditions for Wheelchair Rentals

- Rentals are Free of Charge.
- Rental period is from 10am to 6pm.
- Closed Tuesday
- We ask that you have another person with you to operator the wheelchair.
- Wheelchairs must be returned same day, within the rental period, and to the same rental location.
- Rentals may be stopped for the day due to bad weather and other conditions.



市民による自治120年



■ For Inquires **Kyoto Raku Raku Anshin Wheelchair Rental Secretariat**
 (Located at the Kyoto Shinbun Center) Tel: 075-241-6192

Tourism and MICE Promotion Office
 Published: March 2018 Kyoto City Publication No.

The wheelchairs used in this program were kindly donated by Kyoto City Welfare Nursing Care Supply Association, and all rental locations are supported by Fushimi University.

Spirit of Japan Course: Visiting Shrines in Fushimi Deeply Connected with Japanese Sake Industry

Length Approx. 3km (excludes time spent at each location)

Walking time Approx. 1hour (excludes time spent at each location)

Course Route Fushimi University → Fushimi Otesuji Shopping Area → Gekkeikan Okura Sake Museum → Teradaya Inn → breweries lining the takase river, Ryoma-dori Shopping Street → Nayamachi-dori Shopping Street → Fushimi Otesuji Shopping Area → Gokonomiya Shrine → Fushimi University

*Please be sure to return wheelchairs to the original rental location.

Course Outline

Tour breweries and shops lining one of Japan's foremost sake areas, Fushimi, and along the way pay a visit to Gokonomiya Shrine, renowned for its water.



Fushimi Sake Village (Fushimi Saka Gura Kouji)

Gokonomiya Shrine

Given the name Gokonomiya by an emperor in the Heian Period this has name has continued to be passed down. The shrine buildings display many characteristics of Momoyama period architecture and the shrine is known as one of Japan's 100 famous waters and as Fushimi no Gokosui. Wheelchair access is possible by entering through the parking lot and using the pavement around the honden shrine to access the shrine's spring water.



Address: 174 Gokugumonzen-cho, Fushimi-ku, Kyoto-shi
Open: 9:00-16:00
Entry Fee: Free entry to shrine grounds
Tel: 075-611-0559
Access: 5 min walk from Fushimi Momoyama Station on Keihan Main Line or a 3min walk from Momoyamagoryo-mae Station on Kintetsu Kyoto Line
Restrooms: Not wheelchair accessible

Gekkeikan Okura Sake Museum

The sake maker Gekkeikan was established in 1637, and this museum run by the company gives a good overview of the company and sake brewing. Visitors can observe past tools and methods for making sake while learning about the brewing process and the history of Japanese sake. Visitors can gladly end their visit with a sake tasting.

Address: 247 Minamihama-cho, Fushimi-ku, Kyoto-shi
Open: 9:30-16:30 (Last entry 16:15)
Closed: Obon Holiday in August and New Year's Holiday Period (please check for more details)
Entry Fee: 300 JPY
Tel: 075-623-2056
Access: Approx. 10 min walk from Fushimi Momoyama Station on the Keihan Main Line
Restrooms: Wheelchair accessible



Fushimi Sake Village (Fushimi Saka Gura Kouji)

Visitors can enjoy local sake from 17 brewers at this Japanese sake theme park, which opened in March 2016. The park was designed as a narrow lane lined with 8 different shops featuring delicious food and sake counter service. All items are served to your table so you can try combinations of food and sake from each store without leaving your seat.

Address: From 115 Nayamachi, Fushimi-ku, Kyoto City to 82-2 Hirano-cho, Fushimi-ku, Kyoto City
Open: 11:30-23:00 (store hours may differ)
Closed: Tuesday
Tel: 075-748-8831
Access: An 8 min walk from Fushimi Momoyama Station on the Keihan Main Line
Restrooms: Wheelchair accessible



Kizakura Fushimigura

New facility opened by famous sake maker Kizakura in August of 2016. Visitors can observe and learn the company's process for making Japanese sake and beer on tap. In the adjoining restaurant, customers can match limited edition sake and fresh beer on tap with various dishes.

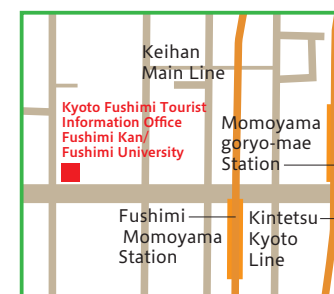


Address: 53 Yoko-ji Shimomizu Kajiwara-cho, Fushimi-ku, Kyoto City
Open: 10:00~16:00
Closed: New Year Holiday Period
Tel: 075-644-4488
Access: A free shuttle bus is available from the Kizakura Kappakantori & Chushojima Station (due space limitations to make use of this service please have an accompanying person foldup the wheelchair)
Restrooms: Wheelchair accessible

Kyoto Raku Raku Anshin- Wheelchair Rentals in Fushimi

Tourist Information in Fushimi Otesuji Shopping Area

Kyoto Fushimi Tourist Information Office
Fushimi Kan/Fushimi University



☎ 075-606-2406

