

**Length** Approx. 260m (excludes time spent within the shrine grounds)

**Time** 8 min (excludes time spent the shrine)

**Course Route** Fushimi Momoyama Station on Keihan Main Line →  
Fushimi Inari Station → Fushimi Inari Taisha Shrine →  
Fushimi Inari Station → Momoyama Station on Keihan Main Line

## Fushimi Inari Taisha Shrine

With its history beginning in 711, the shrine is the head of all Fushimi Inari Shrines in the country. Originally the shrine was known for its agriculturally related deities, but now it is most widely known for business related deities. Each year it competes for the top 2 spots as the most visited shrine for New Years in Kansai. The honden or main shrine (Important Cultural Property) is a Muromachi Period construction. The shrine is famous for the vermillion gates of the Senbon Torii running the paths from the honden to the inner shrine. There are ramps built along the road to the shrine and at the honden, so that wheelchair users aided by an accompanying person will have an easier time visiting Fushimi Inari Taisha Shrine.



**Address:** 68 Fukakusa Yabunouchi-cho, Fushimi-ku, Kyoto-shi  
**Open:** 9:30-16:30 (Last entry 16:15)  
**Entry Fee:** Free entry to shrine grounds  
**Tel:** 075-641-7331  
**Access:** 5min walk from Fushimi Inari Station on Keihan Main Line or just across from JR Inari Station on JR Nara Line.  
**Restrooms:** Wheelchair accessible

2-C

- Komafuda
- Seven-Eleven
- Wheelchair Accessible Restroom

\*Please be aware that based on the grounds of the temple or shrine that an accompanying person may be necessary, and based on the location of buildings and the terrain, viewing or accessing the building may be difficult or not possible. For more details about wheelchair accessibility, please contact the temple or shrine directly.

\*There may be cases where you will be required to show a disability certificate.

When you finished with this map, please recycle with misc. paper at any collection point!



Kyoto Raku Raku Anshin

Wheelchair Rentals Fushimi

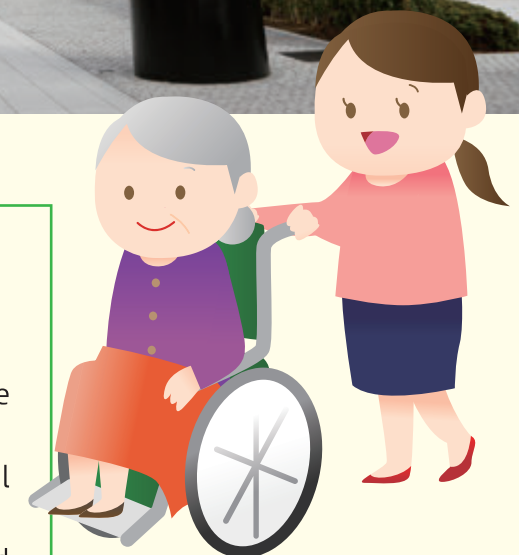
# Fushimi Wheelchair Access Sightseeing Map

Kyoto City, in order to create an environment so that all visitors can enjoy sightseeing with in the city, regardless of age or disability, is offering free wheelchair rentals in the Fushimi area based on the cooperation of local bicycle rental shops and other private businesses.



## Conditions for Wheelchair Rentals

- Rentals are Free of Charge.
- Rental period is from 10am to 6pm.
- Closed Tuesday
- We ask that you have another person with you to operator the wheelchair.
- Wheelchairs must be returned same day, within the rental period, and to the same rental location.
- Rentals may be stopped for the day due to bad weather and other conditions.



市民による自治120年



■For Inquires Kinki Nippon Tourist KYOTO branch  
TEL 075-221-7401

Tourism and MICE Promotion Office  
Published: March 2018 Kyoto City Publication No.

The wheelchairs used in this program were kindly donated by Kyoto City Welfare Nursing Care Supply Association, and all rental locations are supported by Fushimi University.



## Spirit of Japan Course: Visiting Shrines in Fushimi Deeply Connected with Japanese Sake Industry

**Length**      **Approx. 3km** (excludes time spent at each location)

**Walking time**      **Approx. 1hour** (excludes time spent at each location)

**Course Route**      Fushimi University → Fushimi Otesuji Shopping Area  
→ Gekkeikan Okura Sake Museum → Teradaya Inn →  
breweries lining the takase river, Ryoma-dori Shopping  
Street → Nayamachi-dori Shopping Street → Fushimi  
Otesuji Shopping Area → Gokonomiya Shrine → Fushimi  
University

\*Please be sure to return wheelchairs  
to the original rental location.

### Course Outline

Tour breweries and shops  
lining one of Japan's foremost  
sake areas, Fushimi, and  
along the way pay a visit  
to Gokonomiya Shrine,  
renowned for its water.



Fushimi Sake Village (Fushimi Saka Gura Kouji)

### Gokonomiya Shrine

1-E

Given the name Gokonomiya by  
an emperor in the Heian Period  
this has name has continued to be  
passed down. The shrine buildings  
display many characteristics of  
Momoyama period architecture  
and the shrine is known as one of  
Japan's 100 famous waters and as  
Fushimi no Gokosui. Wheelchair  
access is possible by entering  
through the parking lot and using  
the pavement around the honden  
shrine to access the shrine's spring  
water.



**Address:** 174 Gokumonzon-cho, Fushimi-ku, Kyoto-shi  
**Open:** 9:00-16:00  
**Entry Fee:** Free entry to shrine grounds  
**Tel:** 075-611-0559  
**Access:** 5 min walk from Fushimi Momoyama Station on  
Keihan Main Line or a 3min walk from Momoyamagoryo-mae  
Station on Kintetsu Kyoto Line  
**Restrooms:** Not wheelchair accessible

### Gekkeikan Okura Sake Museum

2-D

The sake maker Gekkeikan was established in 1637, and this  
museum run by the company gives a good overview of the  
company and sake brewing. Visitors can observe past tools and  
methods for making sake while learning about the brewing  
process and the history of Japanese sake. Visitors can gladly end  
their visit with a sake tasting.

**Address:** 247 Minamihama-cho, Fushimi-ku,  
Kyoto-shi  
**Open:** 9:30-16:30 (Last entry 16:15)  
**Closed:** Obon Holiday in August and New  
Year's Holiday Period (please check for more  
details)  
**Entry Fee:** 300 JPY  
**Tel:** 075-623-2056  
**Access:** Approx. 10 min walk from Fushimi  
Momoyama Station on the Keihan Main Line  
**Restrooms:** Wheelchair accessible



### Fushimi Sake Village (Fushimi Saka Gura Kouji)

1-C

Visitors can enjoy local sake from 17 brewers at this Japanese  
sake theme park, which opened in March 2016. The park was  
designed as a narrow lane lined with 8 different shops featuring  
delicious food and sake counter service. All items are served to  
your table so you can try combinations of food and sake from  
each store without leaving your seat.

**Address:** From 115 Nayamachi,  
Fushimi-ku, Kyoto City to 82-2  
Hirano-cho, Fushimi-ku, Kyoto City  
**Open:** 11:30-23:00 (store hours may  
differ)  
**Closed:** Tuesday  
**Tel:** 075-748-8831  
**Access:** An 8 min walk from Fushimi  
Momoyama Station on the Keihan  
Main Line  
**Restrooms:** Wheelchair accessible



### Kizakura Fushimigura

2-A

New facility opened by famous sake maker  
Kizakura in August of 2016. Visitors can  
observe and learn the company's process  
for making Japanese sake and beer on tap.  
In the adjoining restaurant, customers can  
match limited edition sake and fresh beer  
on tap with various dishes.



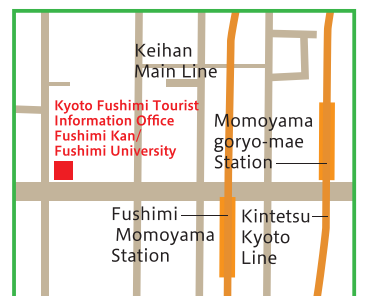
**Address:** 53 Yoko-ji Shimomizu Kajiwara-cho,  
Fushimi-ku, Kyoto City  
**Open:** 10:00~16:00  
**Closed:** New Year Holiday Period  
**Tel:** 075-644-4488  
**Access:** A free shuttle bus is available from the  
Kizakura Kappakantori & Chushojima Station  
(due space limitations to make use of this service  
please have an accompanying person foldup the  
wheelchair)  
**Restrooms:** Wheelchair accessible

### Kyoto Raku Raku Anshin- Wheelchair Rentals in Fushimi

1-D

Tourist Information in Fushimi Otesuji Shopping Area

Kyoto Fushimi Tourist Information Office  
Fushimi Kan/Fushimi University



075-606-2406

